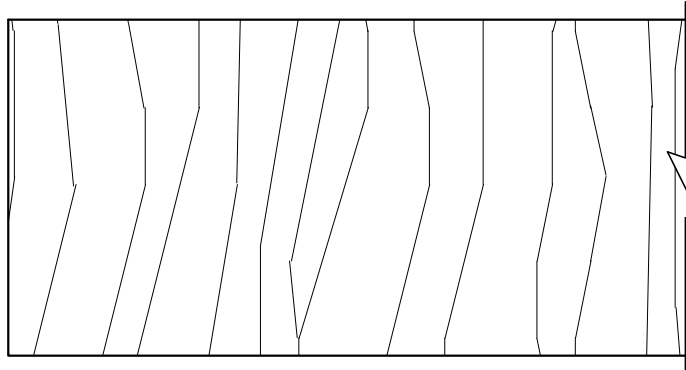
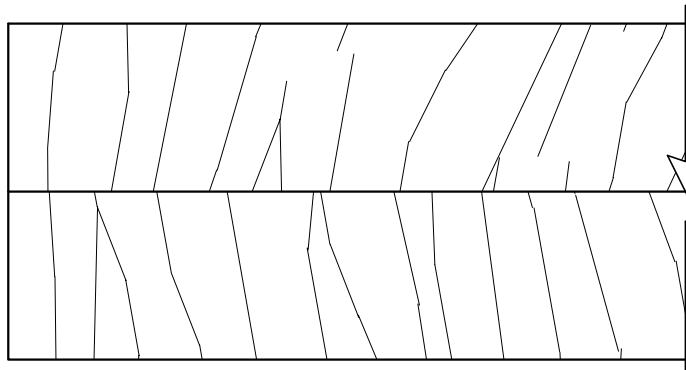


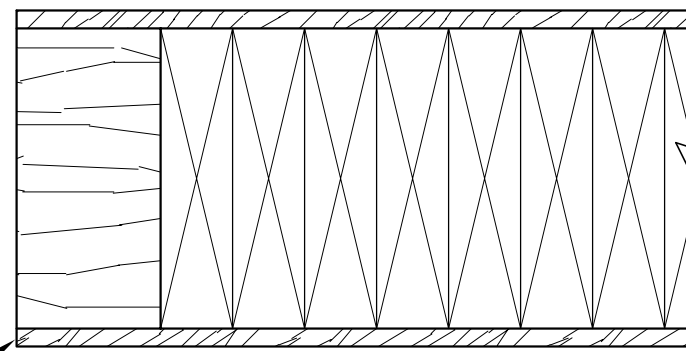
LVD STANDARD ENGINEERED STILE / RAIL
Typically DF core @ exterior, Pine @ interior



SOLID STILE / RAIL
For doors up to 1 3/4"

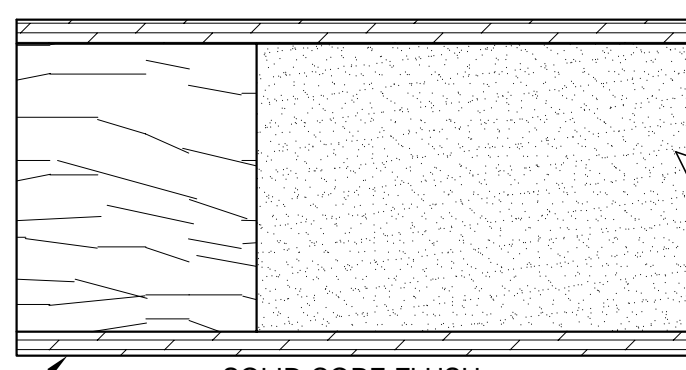


2 PIECE LAMINATE STILE / RAIL
For doors over 1 3/4"



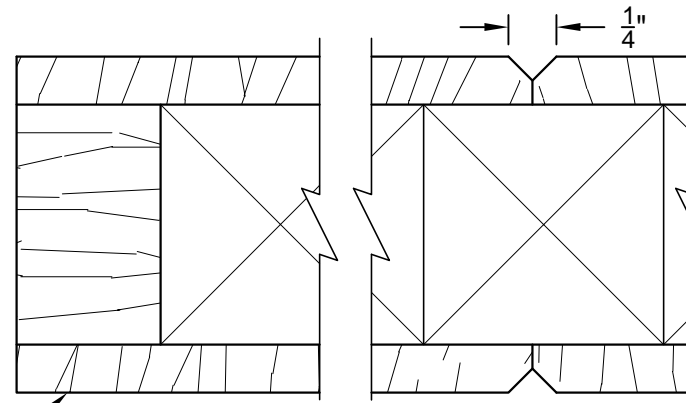
MULTI - LAM ENGINEERED STILE / RAIL
For narrow stiles & rails

STD
3/32"
Veneer



SOLID CORE FLUSH
Suitable for 20 minute rating

1/8"
Ply



LVD STANDARD PLANK DOOR
V grooves optional

1/4"



LIBERTY VALLEY DOORS
INCORPORATED
P.O. BOX 176, COTATI, CA 94931
TEL. (707) 795-8040
FAX (707) 795-9258

TYPICAL DOOR CONSTRUCTION DETAILS

Date: 12/05/07

Revisions



Scale: Full

Drawn By:

RP